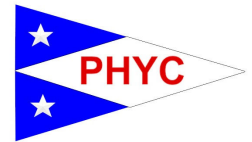




2014 Lake Huron International
Saturday July 5th
Hosted by the Port Huron Yacht Club
SAILING INSTRUCTIONS



1. Rules

1.1. The Race shall be governed by the “rules” as defined in the current Racing Rules of Sailing for 2009-2012 (RRS), which includes the following (except as changed by the Sailing Instructions):

- 1.1.1.** The prescriptions of U.S. Sailing
- 1.1.2.** This Notice and Conditions of Race (*Notice of Race*).
- 1.1.3.** The Sailing Instructions and any amendments.
- 1.1.4.** Applicable U.S. and Canadian Coast Guard Rules and Regulations.
- 1.1.5.** Lake Huron Performance Handicap Racing Fleet (*PHRF*) rules as administered by the RC.

2. NOTICES TO COMPETITORS

2.1. The OA will post information on the Official Notice Board located at PHYC and Yachtscoring.com. Competitors will be deemed to have knowledge of such information from the time it is so posted. The posted information will include assigned ratings and may include amendments to the Notice of Race and/or the Sailing Instructions.

3. CHANGES TO SAILING INSTRUCTIONS

3.1. Any change to the sailing instructions will be posted before 1200 on July 5th

4. SIGNALS MADE ASHORE

- 4.1.** Signals made ashore will be displayed at the PHYC flagstaff.
- 4.2.** When flag AP is displayed ashore, ‘1 minute’ is replaced with ‘not less than 90 minutes’ in race signal AP.

5. SCHEDULE OF RACES

5.1. The scheduled time of the warning signal for the race is 1800.

6. CLASS SPLITS / STARTING ORDER

6.1. Final class splits and starting order will be posted by 1300 on July 5th.

7. THE COURSES

7.1. John Blunt Memorial Race - Approximately 74.7 NM

From the start the boats will go a heading of 342T for 3.7NM to the Number 12 Channel Marker (approximately N43 05.462 W82 24.618) leaving it to starboard. Then heading 60T for 18.1NM to the Kettle Point Marker, V4 (approximately N43 14.346 W82 03.063) leaving it to port. Then will proceed on a heading of 300T for 23.8 NM to Port Sanilac Harbor rounding mark (approximately N43 25.81 W82 31.75) leaving it to port. The fleet will then proceed toward the finish at a heading of 169T for a distance of 25.7 NM and pass under the Blue Water Bridge and follow the river for another 2.2NM to the finish.

7.2 Kettle Point Course - Approximately 47.2 NM

From the start the boats will go a heading of 333T for 2.8NM to the Number 10 Channel Marker (approximately N43 04.396 W82 24.754) leaving it to starboard. Then heading 58T for 18.7NM to the Kettle Point Marker, V4 (approximately N43 14.346 W82 03.063) leaving it to port. Next on a heading of 241T for 18.1NM to the Number 12 Channel Marker (approximately N43 05.462 W82 24.618) leaving it to port. Then proceed toward the finish at a heading of 184T for a distance of 5.1NM and pass under the Blue Water Bridge and follow the river for another 2.2NM to the finish.

8. MARKS

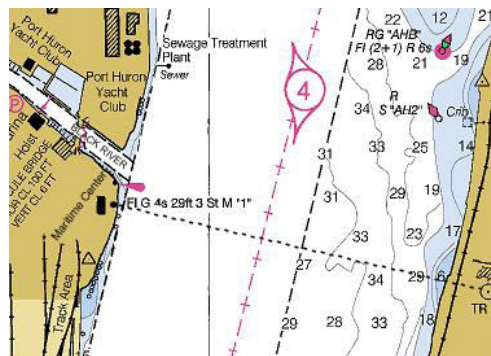
- 8.1** F mark – 4’ diameter yellow ball marked with a black letter.
- 8.2** Channel Marker #12 – Red Channel Marker with red flashing light.
- 8.3** North Kettle Point Marker (V4) – Red Channel Mark with red flashing light.
- 8.4** Port Sanilac Harbor Rounding Mark – White Cylinder with a white flashing light.

9. THE START

- 9.1** Races will be started by using rule 26 with the warning signal given 5 minutes before the starting signal.
- 9.2** The starting line will be between F mark (approximately N43 01.93 W82 23.05) to port and the Orange Flag displayed on the Race Committee boat to starboard.
- 9.3** Boats whose warning signal has not been made shall avoid the starting area.
- 9.4** The starting order will be provided with splits.

10 THE FINISH

- 10.1 The finish line shall be between an orange flag at the Maritime Center just south of the Black River in Port Huron and a large cell tower at approximately N42.58.217, W082.24.538 on the Canadian side as shown in the chart to the right.
- 10.2 Competitors are required to contact the Finish Line Race Committee when crossing beneath the North Blue Water Bridge by calling VHF channel 71 or by telephone at 810-650-4403 if unable to reach the committee by radio.
- 10.3 Each finish will be acknowledged by a gun or sound signal. Immediately after finishing and clearing the finish line each yacht must confirm their finish on VHF channel 71. Each yacht must record their finish time and provide if requested from OA.
- 10.4 After 1300 on July 7th the finish crew will not be on station, and times must be delivered in writing to OA upstairs at PHYC office.



11 TIME LIMIT / RETIREMENT

- 11.1 There will be no time limit for this race.
- 11.2 A yacht that retires from a race must notify the race committee as soon as possible using VHF 71, failing that, immediately after arriving by calling 810-650-4403.

12 ROTES AND REQUESTS FOR REDRESS

- 12.1 Protest forms are available at the PHYC.
- 12.2 Protests shall be delivered within the protest time limit to the Race Chairman at PHYC or Race Chairman Mailbox upstairs at PHYC.
- 12.3 OA will post pending protests on notice board with instruction.
- 12.4 The protest time limit is 2 hours after the protesting boat has finished.

13 SAFETY REGULATIONS

- 13.1 Each yacht racing, depending on country of registration, shall comply with US or Canadian Coast Guard requirements.
- 13.2 Port Huron Yacht Clubs strongly recommends (but does not require) that all personnel on deck wear personal flotation at night without exception, and at all other times except when the captain of the boat directs that it may be set aside. Competitors are reminded that it is the competitor's individual responsibility for wearing personal buoyancy adequate for the conditions (RRS 1.2) and that each boat is solely responsible for deciding whether or not to start or to continue racing (RRS 4).

14 EQUIPMENT AND MEASUREMENT CHECKS

- 14.1 A boat or equipment may be inspected at any time for compliance with the class rules and sailing instructions.

15 RADIO COMMUNICATION

- 15.1 A boat shall neither make radio transmissions while racing nor receive radio communications not available to all boats. This restriction also applies to mobile telephones.
- 15.2 Race Committee may monitor and use VHF 71 to hail sail numbers of infringing yacht. Failure to do so will not be grounds for redress.
- 15.3 It is strongly recommended that all yachts monitor communication on VHF 16 and 71 while racing.

16 PRIZES

- 16.1 Flags and Trophies will be awarded to top finishes in each class.

Finish Time _____

Boat Ahead _____

Boat Astern _____